

# THE LANAI CONNECTION

VOLUME 14, ISSUE 1

APRIL 2004

## 10TH LACA ANNUAL DINNER MEETING MAY 15, 2004

The Board of Directors would like to convey their sincere appreciation to outgoing directors **Lorraine Akamine Ching**, Nomination Chairman and **Eleanor Bayron Ozoa**, Lanai Director, for their invaluable service.

Inducted as *incoming directors* at Pearl Country Club will be **Francine En-drina Costales**, **Garek Eligado**, **Sheila Awakuni Eligado**, **Jane Sakamura Nakamura**, **Jo-Ann Niibu Zukaner**, and *incumbent directors* **Mary "Chongie" Carmack**, **Lorna Cabanilla Young**, **Bruno Oroyan**, **Gloria Obado Reyes**, **Bill Ruidas**.



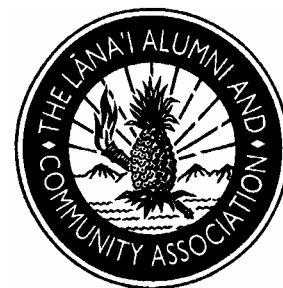
Photo courtesy of Jerry Whaley of Reflections

Those who will be donating items for the silent auction are requested to arrive by 4:30 p.m. to give the committee time to receive and set up the auction tables.

The program includes a short business meeting followed by dinner, on-going entertainment, karaoke and the zany comedian, **Mel Cabang!** Join us from 5:00 p.m. - 10:00 p.m. for an invigorating evening of fun and hometown fellowship.

### 2004 CALENDAR OF EVENTS

- |               |  |
|---------------|--|
| <b>April</b>  | <i>Lanai Connection</i> distributed<br>E-Newsletter on the web   |
| 14            | Board of Directors meeting   |
| 25            | 10 <sup>TH</sup> Annual Meeting and Silent Auction sign up form/payment due  |
| <b>May 15</b> | 10 <sup>th</sup> LACA Annual Dinner Meeting<br>Silent Auction<br>LHS Awards Assembly   |
| <b>June</b>   | LHS Commencement<br>LACA 'S new fiscal year begins   |
| 9             | Board of Directors meeting   |
| <b>August</b> | <i>Lanai Connection</i> distributed, E-Newsletter on the web   |
| 2             | Vegas Golf Tournament entry form due<br>Contact Frank Primicias if interested in purchasing '04 LACA Vegas Connection video. |
| 14            | '04 LACA Las Vegas Connection reservation form/payment due<br><b>Vegas Vance</b> Sign up form due                            |



*The Lana'i Connection* is published three times a year (November, April, and August) to enhance the purposes of the Lana'i Alumni and Community Association.

Editor:  
**Rosita Viduya Huev**

Copy Readers:  
**Nona Minami**  
**Robert Viduya**

Contributing Writers:  
**Class Reps, Alumni,**  
**Lanaians**

Designer:  
**Donna Shiroma-**  
**Nakasue**

**Interested in**  
**Membership?**  
Life Membership to LACA is only \$10!

**Correspondence may be**  
**directed to:**

The Lanai Connection  
P.O. Box 515  
Pearl City, HI  
96782-0515

Fax: (808) 456-4215

**2004 LACA LAS VEGAS CONNECTION**

Ohana &amp; Maile Room, California Hotel &amp; Casino

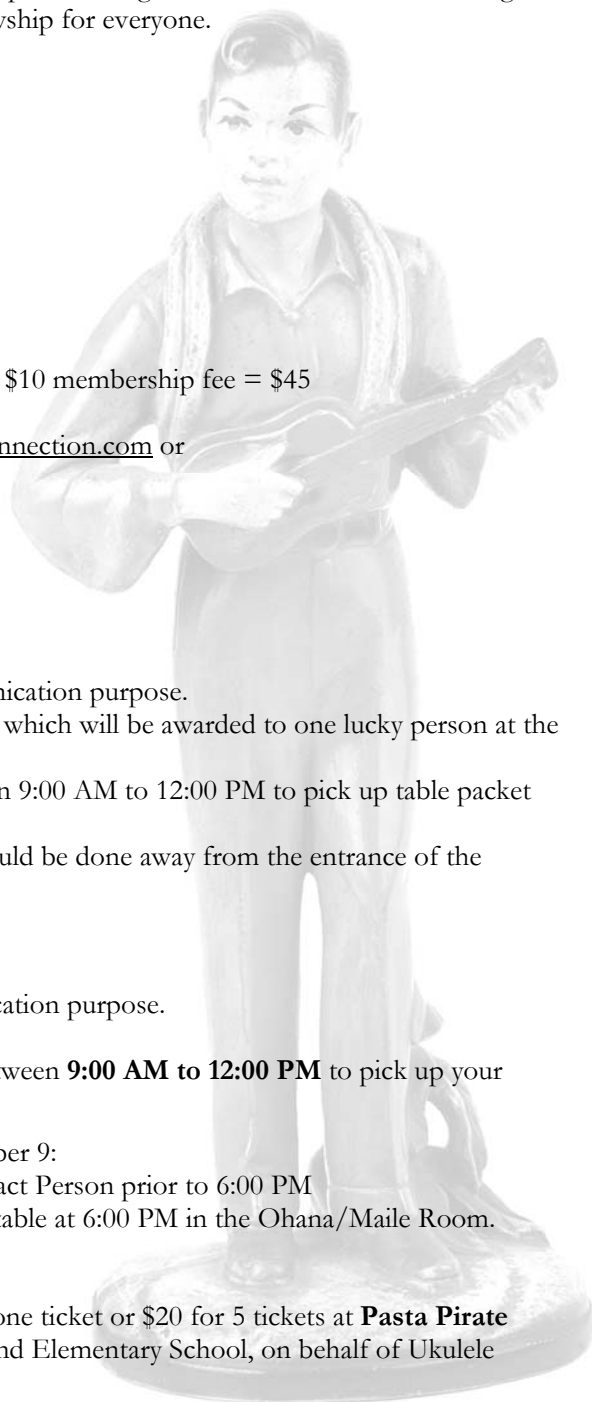
October 9, 2004 6:00 PM - 10:00 PM

**Reservation deadline: August 14, 2004****Co-Chairman: Jo-Ann Niibu Zukeran and Rosita Viduya Hueu**

People have said we're a unique association for meeting every year in Las Vegas for a Lanai reunion!

Since 1996 the attendance has annually increased and the interest keeps mounting. Please adhere to the following points to ensure another memorable and enjoyable evening of fellowship for everyone.

1. **Member, spouse, child/teenager** ages 5-19 will each pay \$35.
  - A. Write check payable to LACA.
  - B. Your canceled check will be your receipt.
  - C. Mail payment and reservation form to:  
**LACA, Attn: LV Chairman**  
**P.O. Box 515 Pearl City, HI 96782**
2. **Non member** will be assessed \$45.
3. Attendee who signs up as **new member** will be assessed \$35 + \$10 membership fee = \$45
  - A. Write check payable to LACA.
  - B. Membership form can be downloaded from [www.lanaiconnection.com](http://www.lanaiconnection.com) or
  - C. Request a membership form from Jo-Ann or Rosita.
4. Phone reservations will be unacceptable.
5. Each group of 10 must designate a Contact Person (CP).
6. **Contact Person's** responsibilities include:
  - A. Mailing in names/payments
  - B. Providing a self-addressed stamped envelope for communication purpose.
  - C. Having one person responsible for your table centerpiece which will be awarded to one lucky person at the table.
  - D. Reporting to Pasta Pirate on Saturday, October 9, between 9:00 AM to 12:00 PM to pick up table packet (name tags, etc.) and getting table assignment.
  - E. Distributing name tags before 6:00 PM. (Distribution should be done away from the entrance of the Ohana/Maile Room to eliminate gridlock.)
7. If you are **unable to get a group of 10**:
  - A. Fill out and send in the reservation form and payment.
  - B. Provide a self-addressed stamped envelope for communication purpose.
  - C. The Committee will assign your seating at a table.
  - D. Report to **PASTA PIRATE** on Saturday, **October 9**, between **9:00 AM to 12:00 PM** to pick up your name tag and be informed of a table assignment.
8. For **Golfers** who have a conflict of activities on Saturday, October 9:
  - A. If possible, please pick up your name tag from your Contact Person prior to 6:00 PM
  - B. If you are not with a group of 10, check in at the Sign-in table at 6:00 PM in the Ohana/Maile Room.
9. We would like to request that **every attendee** wear a lei.
10. Donations for the ukulele raffle tickets will be accepted: \$5 for one ticket or \$20 for 5 tickets at **Pasta Pirate from 9:00 a.m. - 12:00 p.m.** Proceeds to benefit Lanai High and Elementary School, on behalf of Ukulele Craftsman, **Pedring Dugay** and **LACA members and guests.**



## LACA/PSHF CONTRIBUTORS

**MAHALO** to all who have contributed to either LACA or PSHF (or both!) since our last issue went to press. (Note our list in this issue of our latest contributors.) And there are so many to whom we owe our thanks that we have to let you know about them in 4- month intervals in our newsletter. There is a special thanks due to those who have chosen to contribute regularly, year in and year out, helping us to reach our goals as an organization dedicated to helping our Alma mater and at the same time promoting fellowship among our Alumni and friends of Lanai.

We have only one small way of making our appreciation known to these “regulars” and that is to award membership in our three Clubs: *Century Pineapple Club* (\$100 accumulated contributions or more); *Golden Pineapple Club* (\$500 +) and *Lanai Hale Club* (\$1000 +). Certificates of membership in these clubs are awarded at our annual meetings. We especially ask the awardees to attend so they can be widely recognized and thanked.

We also deeply appreciate the “new” ways members have found to contribute by honoring deceased friends and family or honoring a classmate or friend on a special occasion.

Here are the two ways you can choose to contribute:

1. For a tax-deductible contribution, please make your check out to Public Schools of Hawaii Foundation (or just PSHF) and write “for LACA” in the bottom left-hand corner of your check. These monies go directly to the School for scholarships, awards, and grants.
2. For a non-tax deductible contribution, please make your check out to **LACA**. These funds cover our operational expenses.

Please mail either or both checks to the following address:



**LACA**  
Attn: PSHF Coordinator  
P. O. Box 515  
Pearl City, HI 96782-0515

## OUR LATEST CONTRIBUTORS

Since our November '03 issue, we have received monetary contributions from the following members and friends:

Rowena J. Belez  
Robert and Lorraine  
Ching  
Suzanne P. Damian  
Faith N. Eugenio  
Pedro and Nedine Gali  
Masako Hamada  
Setsuko Hashimoto  
Roberto Hera  
George T.Higa  
Hatsue Higa

Ayako Hirai  
Nobue N. Hirakawa  
Kiyomi Kodama  
Nancy B. Lantz  
Janet M. Miyashiro  
Margaret Platt  
Angeline F. Salvador  
Marcellino Sugitan  
Daniel Tadios  
Lily Y.Tomita  
Robert Viduya

## HONORING OTHERS...

Recently two members have contributed to our funds while honoring memories of husband and friend.

**Kiyomi (Kay) Kodama** gave \$100 to LACA in memory of her late husband, **Tadashi**.

**Hatsue (Hattie) Higa** gave \$50 to PSHF in the name of her deceased classmate, **Patsy (Perry) Gilliam**.



## LANAI HIGH & ELEMENTARY HOMECOMING



It was an awesome and exhilarating experience! Four banners mounted at the Lanai Senior Center generated enthusiastic support from alumni and LACA members to participate in the school's Homecoming on February 2 - 7, 2004. Throughout the Homecoming festivities, it was heartwarming to see the link between the young (Pinelads and Pine Lasses) and older folks. Youngsters and old timers talked stories, danced, and spontaneously entertained. The Senior Center was really rocking as those with hidden talents took to the floor. Looks are deceiving ~ a seemingly quiet gentleman sat in the back of the room. He took center stage and belted and yodeled to everyone's surprise! His name? **Ricky Sanchez**. This writer was told the cops "let the old folks rock" until after midnight! Something that would pass only on Lanai.

An original banner designed by **Solidad Obado's** grandson and used in 1989 for the 50<sup>th</sup> LHES Anniversary hung at the entrance. He had printed the words "Proud of the Past, Proud of the Future, High School Pinelads, Alumni, Pinelasses." **Robert Viduya's** winning entry chosen by the **Lanai Alumni Association** during **Thomas Roy Nunotani's** administration has been LACA's motto. "Lanai, We Remember" was also displayed in the Senior Center.

Several memory-making and Kodak moments: The grand parade that circled Dole Park twice. Watching the LHS Homecoming Court open the evening Saturday ceremony prior to the basketball game with a swinging jitterbug number. The exciting point for point basketball game between Lahainaluna and Pinelads. Pinelads winning the game! Alumni bonding and

showing school spirit through songs and cheers.

Hats off to the Coordinators and members who did an outstanding job spearheading the various committees: **Eleanor B. Ozoa, Solidad Obado, Marian Ching, Vicky Gillory, Sheila & Garek Eligado, Robert Urpanil, Claude Huerta, Gloria Reyes, Eloise Botelho, Mitsuko Matsuda, Stanley Ruidas, Anita Saranillo, Rosita Hueu.**

*We thank:* Friday evening's cooks **Philip Ruidas, Steven Tabata, Guy Wong, Darylne Mano** for the use of the Coca Cola truck in the parade. **Mr. Pierce Myers**, principal, who extended the invitation to the alumni. **Maggie Masicampo** for the use of the Lanai Senior Center for the week. **The attendees** who abundantly provided for the potluck dinner for two nights, (it was planned to be a one night potluck dinner), the generous desserts which were served for breakfast, lunch and dinner the next day. **Castle and Cooke Resorts** for the generous donations of door prizes and for the use of golf carts in the parade. **Guy and Len Fabrao-Wong** for providing their four seater golf cart for **King Hilio and Queen Olivia**. Guy was the royal couple's driver. **Father Raymund**, pastor of Sacred Hearts Church, for delivering the Friday dinner invocation. The four musical groups: **Lanai Serenaders, The Pineapple Serenaders, Garek Eligado's Group, RTurn.** Alumni song and cheer leaders who showed they still have the moves. The float flower makers: **Dottie Tan, Eleanor Ozoa, Tina Caballero. Leona Pagay and Barney Phelps** who filled the green and gold balloons with helium. To **Fran Pagay** for setting up a web site at <http://msnusers.com/MyIMBuddies> for others to view the many Homecoming photos not included in this issue.

A heartfelt mahalo to **Betty Barbadillo, Gloria Lopez and Eloise Mahaulu** who volunteered to recruit new members for LACA. Way to go, gals! **Robert Kinoshita** is the Membership Chairman and other committee members are **Mary Carmack, Walter Manriki and John Tanodra.**

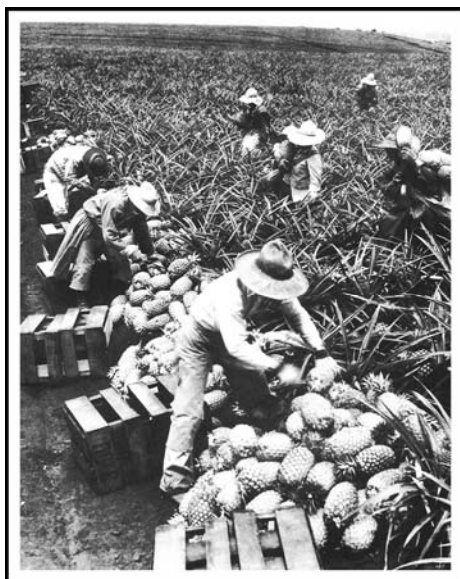
We apologize for inadvertently overlooking others who volunteered their time and assisted in various ways. Positive comment made by attendees was, "Let's do it again next year!"

Log on to [www.lanaiconnection.com](http://www.lanaiconnection.com) to see more Homecoming photos!



## LANA'I MUSEUM

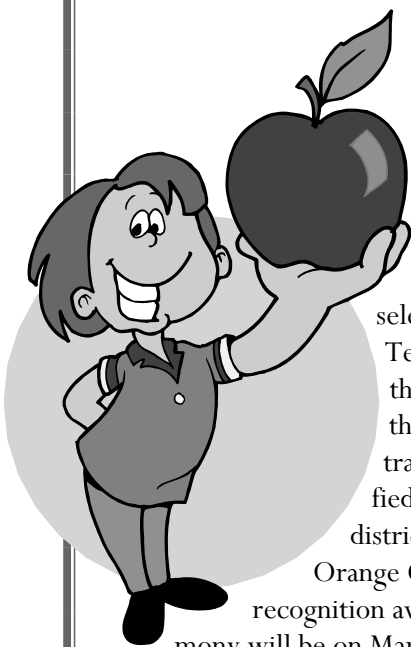
**Nani Kwon Watanabe**, Class of 1970, was chosen as the Cultural Resource Manager for Castle and Cooke Resorts on Lanai. Her role is to maintain and set up a museum with displays depicting the pineapple plantation era and life styles of Lanaians in earlier years. She will be training docents to conduct scheduled tours. If you have artifacts or vintage photos to share, contact Nani at (808) 565-3240 or email her at [nani\\_watanabe@lanai-resorts.com](mailto:nani_watanabe@lanai-resorts.com).



## *In Loving Memory*

We extend our heartfelt sympathy to the families and friends of **Paul Kokubun**, Class of 1947 and to **Marie Remiticado Haime**, Class of 1949.

## 2004 TEACHER OF THE YEAR



**Joice Dalde Alapag**, Class of 1970, was selected as Teacher of the Year in the Capistrano Unified School district in south Orange County. A

recognition award ceremony will be on March 31.

She will receive a stipend and two plaques. One will be for Kinoshita School and the other will have her name and picture which will be placed at the front entrance of the school. For a local flavor, the Principal, a Union Rep and Joice will be wearing orchid lei.

Preceding her selection, in addition to her profile, she was required

to submit her views on political issues concerning education in California. The annual award goes to a deserving elementary, middle school, and a high school teacher in the district. Candidates will go on to compete at the County level.

Currently, she teaches third grade at Kinoshita School which has an enrollment of 600 students, predominantly immigrants from Mexico and a faculty of over 35 teachers.

She hired a Spanish teacher as a tutor so she could communicate and conduct her parent conferences in Spanish. She is the Grade Level Lead Teacher for a team of six third grade teachers and serves as Master Teacher for Cal State Fullerton University student teachers.

Her teaching has been at in the upper grades in Southern California for 12 years. Her experiences include being Master Teacher for Azusa Pacific University, La Verne

University and Cal Poly University at Pomona. In Covina, her former district, she was also the New Teacher Mentor and Art Mentor.

Joice moved to the mainland in 1966 and graduated from Pomona Catholic Girls High School. She and her husband Glenn belong to the *Chicken Hekka* group and have entertained at the LACA Vegas events in October. Glenn is employed as an Information Systems Supervisor with the LA County, Department of Public Social Services.

Like their mom, her son Kawika received his degree and daughter Maile her Master's degree from Azusa Pacific University.

Our congratulations go to Joice and her family!



# ALUMNI NEWS

## WE CAN HELP...

We would be happy to be of service and help the various Alumni classes share newsworthy happenings or publicize their fundraisers. For clarity, please specify your fundraiser as a class project instead of *Lanai Alumni Association*.

We are abiding by the recommendations of **Attorney Richard Sasaki** and **Certified Public Accountant Chester Obara** in complying with IRS regulations regarding the general excise tax. LACA uses the term to encompass general membership such as in the *Lanai Alumni Las Vegas Golf Tournament* or the *2002 Lanai Alumni Veterans Tribute*.

Your understanding and support in this matter will be greatly appreciated.

### Class of 1954

**Robert and Patricia Hera**, daughter **Jennifer (former Miss Hawaii)** and son-in-law **David**, spent the New Year's holiday in New Zealand with several close friends. They spent a week in Australia, went diving at the Barrier Reef, and enjoyed an opera in Sidney.

In February the Hera's left Lanai for New Orleans to visit with another daughter, two granddaughters, more relatives and take in the Mardi Gras. The grandchildren were treated to Disney World in Florida. All good things came to an end as Grandpa and Grandma Hera traveled with the granddaughters back to North Carolina. Robert and Patricia returned to Lanai on March 8.

### Class of 1958 by Jeri Hirayama Iba

On Friday, October 10, 2003, the Class of 1958 celebrated their 45<sup>th</sup> reunion at California Hotel's Pasta Pirate. **Robert Viduya** did a tremendous job as master of ceremony. **Mae Takata** gave the invocation and everyone enjoyed the delicious dinner. As **Joyce Higa** rang the bell, **Ismael Naanep** read the names of our deceased classmates: **Stanley Nunotani, Richard Masada, Geraldine Masicampo, Raymond Trugillo, Marlene Morita Terada, Mercedes Gilliacone Knowles, Kenneth Higaki, Yolanda Lopez Pua, Naala Iona Kealoha, and Juanita Endrina Estiamba.**

The fun part of the evening was talk story time with many happy and nostalgic memories. We had some kolohe guys! Everyone went home with many door prizes and favors donated by **Ismael Naanep, Joan Okimoto Morison, Emidgio Jamero, Carol Ann Tsumura Fujimoto, Robert and Sidnetta Viduya, Mae Morita Takata, Irene Dalde Seawright** and **Jeri Hirayama Iba**. The enjoyable evening ended with Irene Dalde Seawright leading everyone with the alma mater and Hawaii Aloha.

Thank you to those who were generous in their donations and to the committee members Carol Ann, Robert, Joyce, Emidgio and Jeri who planned this special event and also to the classmates who made the effort to attend.



Front row: Bernard, Mae, Joyce, Jeannette, Irene, Joan, Robert, Jeri, Carol, Teddy

Back row: Leroy, George, Ismael, Emidgio

Log on to [lanaiconnection.com](http://lanaiconnection.com), Class of 1958 photo gallery, to view recent photos sent in by **Bobby Tamashiro**.

## LOCAL BOY MAKES GOOD

### ROBERT GARCIA, SR., CLASS OF 1970

**Robert Garcia**, a native of Lana'i, is the first Hawaii-born Filipino to qualify for the 8<sup>th</sup> World WEKAF Championship (World Eskrima Kali Arnis Federation). The world's largest Filipino martial arts stick-fighting competition will be held in Cebu, Philippines from June 23-25, 2004 and will involve eskrimadors from five USA regions and 35 countries worldwide.

Garcia is the son of **Lauro Garcia** and the late **Josefine Garcia** of Lana'i. Hickam Air Force on Oahu employs Garcia where he recently received his 20-year service pin. Garcia's two second place silver medals won at the November 2003 Regional Championships held in Colorado earn him a place on the USA team. Garcia says he "gives all the glory to God."

Scott Slezak, formerly of California and Hawaii, introduced Garcia to the Doce Pares style of eskrima several years ago. Slezak, now a resident of the Philippines will also compete in this year's world championships.

Garcia credits his continued learning of this particular style of fighting from Grandmaster Alfredo Bandalan, Sr.



**Robert Garcia is pictured with Grandmaster Alfredo Bandalan, Sr. after winning 2<sup>nd</sup> place in his weight division at the recent National Championships.**

Bandalan was voted to be a Grandmaster by seven Cebu Grandmasters last December.

Master Sonny Napial of San Ramon, California and Master Joe Napial of Oxnard, California spearheaded Bandalan Doce Pares, with schools in Hawaii, California and Illinois. The Doce Pares system is under the direction of Grandmaster Dionisio Canete of Cebu, Philippines who is also the founder of WEKAF.

## MILESTONES



**Hilio** ('38 alumnus) and **Olivia Lopez Raquino** ('42 alumna) celebrated their 62<sup>nd</sup> wedding anniversary in February. In a surprise announcement at the Lana'i Senior Center on February 6, **Rosita Huevo** bestowed on Hilio and Olivia the title of Alumni Homecoming King and Queen. The next day both wore

aloha attire and rode in a decorated resort golf cart in the parade driven by **Guy Wong**. The royal couple was introduced to the student body and Lana'ians prior to the basketball game that evening.

January 9 marked the *Golden Anniversary* for **Vincent** (class of 1951) and **Eleanor Byron Ozoa** (class

of 1953). The happy couple of 50 years went on a vacation to what better place for a Get-away than Las Vegas! When asked what their formula was for marital bliss Vincent, a former Pinelad forward coached by **Kiyoshi Minami** and **Joe Bertomen** smiled and said, "Trying to keep the relationship of yesteryear and not make changes." Eleanor, former Pinelass and song leader, and Vincent make numerous trips to visit their grandchildren in Seattle and unwind in Las Vegas.

And babies make five! **Dr. Richard** ('55) and **Adele Caluya Tesoro** became the proud grandparents of triplets. Mother and babies are thriving. Grandma and Grandpa Tesoro are overjoyed!



LANA'I ALUMNI &  
COMMUNITY ASSOCIATION

P.O. Box 515  
Pearl City, HI 96782-0515



PRSR STD  
U.S. POSTAGE PAID  
HONOLULU, HI  
PERMIT NO. 811

**WE'RE ON THE WEB!**  
**WWW.LANAICONNECTION.COM**

**NORWEGIAN CRUISE**  
Book a first class cruise  
with Norwegian Cruise  
Lines to Alaska, or other  
exciting destinations. Con-  
tact **Jean Pien**, at (808)  
845-8651 LACA's contact  
person with **Tom Wakita**  
of Non Stop Travel.

**PRODUCTIONS** who  
has been instrumental in  
publishing LACA in its 40  
plus pages newsletter in  
February, May, August and  
November. Hawaiian  
events taking place globally  
are listed.  
KALAPAKIKO's office is  
located at 800 Meade  
Avenue, San Francisco, CA  
94124-3554.

**2004 LACA Vegas Connection Video**  
If there is interest in having a video produced as a keepsake  
of the upcoming event, **Frank Paco Primicias, Jane**  
**Garalde's** spouse) will be the videographer. A minimum  
order for 20 videos is required. Cost per video including  
handling charge will be \$25. If interested, write to Frank at  
13055 Suncance Avenue, San Diego, CA 92129, phone  
(858) 484-2653 or email at [primiciasf@san.fr.com](mailto:primiciasf@san.fr.com). **Deadline: August 2, 2004.**



**Congratulations Girls Softball!**